

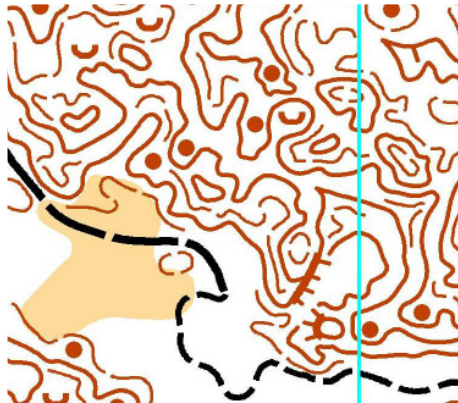


# AUSTRALIAN ORIENTEERING CHAMPIONSHIPS 2026

DISCOVER THE COLOURS OF TASMANIA

## Post-AOC Orienteering EXTEND YOUR STAY!

6 events in the Hobart area  
Thursday 9 April to Sunday 12 April



The 2026 Australian Championships carnival acknowledges and pays respect to the traditional owners whose country we are on and extend our respect to their Elders, both past and present.

# Introduction

Welcome to the 2026 Australian Orienteering Championships post event extravaganza in the Hobart area from Thursday 9 April to Sunday 12 April. The Hobart Shorts returns with a 3 event series. The Tasmanian Sprint Distance Championships and a special sprint will fill your boots with Sprint format action. The Tasmanian Middle Distance Championships will conclude your Tassie orienteering adventure with the intense navigation challenge of the updated Pittwater Dunes East map near Hobart Airport.

## Key Information and Contacts

### Website:

<https://auschamps2026.orienteering.asn.au/>

### Social Media:

F: @australianorienteeringchamps

I: @ausorienteeringchamps

### Entries:

via [Eventor](#)

### Hobart Shorts Enquiries:

E: bert52.elson@gmail.com

### Tas Sprint and Middle Weekend Enquiries

E: swayte@bigpond.net.au

## The Hobart Shorts

The popular Hobart Shorts makes a return with three events across Thursday April 9 and Friday April 10. The series makes use of three varied bush maps close to Hobart not previously used for the Hobart Shorts. The courses are not sprints, but more akin to Middle Distance lengths.

For more information see the [Hobart Shorts Bulletin](#).

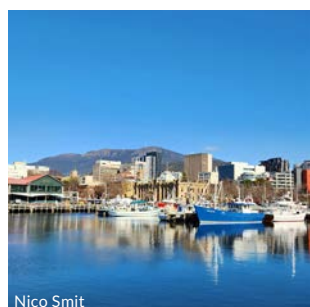
## Tasmanian Sprint and Middle Championships Weekend

The Tasmanian Sprint Distance and Middle Distance Championships will be held near Hobart the weekend after Easter.

On Saturday morning the Tasmanian Sprint Championships will be held on a new map in Sorell, 25 minutes drive east of Hobart. It will be a fast and furious run on a school campus with an active farm and Pioneer buildings that recreate the lives of early settlers living in the Sorell region.

On Saturday afternoon, there will be two short (even by sprint standards) races through the unique buildings of Kingston High School, 20 minutes drive south of central Hobart. The first race will be a seeding race for the second race, which will be a head to head tussle with your nearest competitor.

On Sunday, challenge yourself with the intense navigation of the famous Pittwater Dunes, near Hobart airport. Pittwater Dunes is an extreme test of your navigation skills. The courses are on sand dune terrain with a mix of mature pine forest and open marram grass areas. The map has recently been updated by the original mapper, Mike Dowling.



Nico Smit



Ziyao Xiong



Mark Direen



## Program

Date	Event	Location	First Start
Thursday 9 April	Hobart Shorts 1	Waterworks Reserve, South Hobart	3 pm
Friday 10 April	Hobart Shorts 2	Gorringes Beach, Sandford	10 am
Friday 10 April	Hobart Shorts 3	Seven Mile Beach	3 pm
Saturday 11 April	Tas Sprint Distance Champs	Sorell School, Sorell	10 am
Saturday 11 April	Mini Sprints	Kingston High School, Kingston	3 pm
Sunday 12 April	Tas Middle Distance Champs	Pittwater East	10 am

## Course/Class Tables

### Hobart Shorts and Kingston Mini Sprints

Course	Classes	Navigation
1	M20, M21, M35	Hard
2	W20, W21, W35	Hard
3	M14, M16, M18, M40, M45, M50, M55, M60	Hard
4	W14, W16, W18, W40, W45, W50, W55, W60	Hard
5	M12, M65, M70, M75, M80+	Hard
6	W12, W65, W70, W75, W80+	Hard
7	No age range	Moderate

### Tasmanian Sprint and Middle Distance Championships

Course	Classes	Navigation
1	M20, M21, M35	Hard
2	W20, W21, W35, M18, M40, M45	Hard
3	W18, W40, W45, M16, M50, M55, M60	Hard
4	W16, W50, W55, M65, M70	Hard
5	W60, W65, W70, M75	Hard
6	W75, W80+, M80+, W/M OpenA	Hard
7	W14, M14, W/M OpenB	Moderate
8	W10, W12, M10, M12, W/M OpenC	Easy

## Entry Fees

Event	Adult	Junior
Hobart Shorts (each event)	\$15	\$10
Kingston High mini sprints	\$15	\$10
Tas Sprint Distance Championships	\$20	\$10
Tas Middle Distance Championships	\$25	\$12